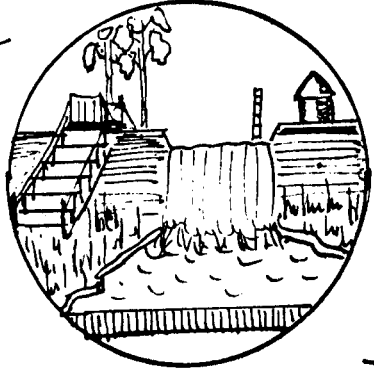
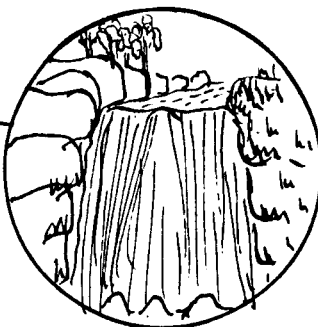
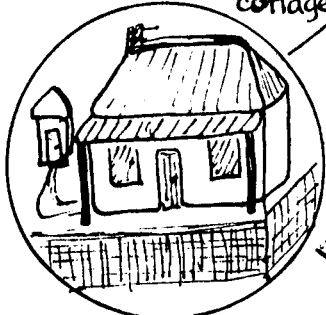
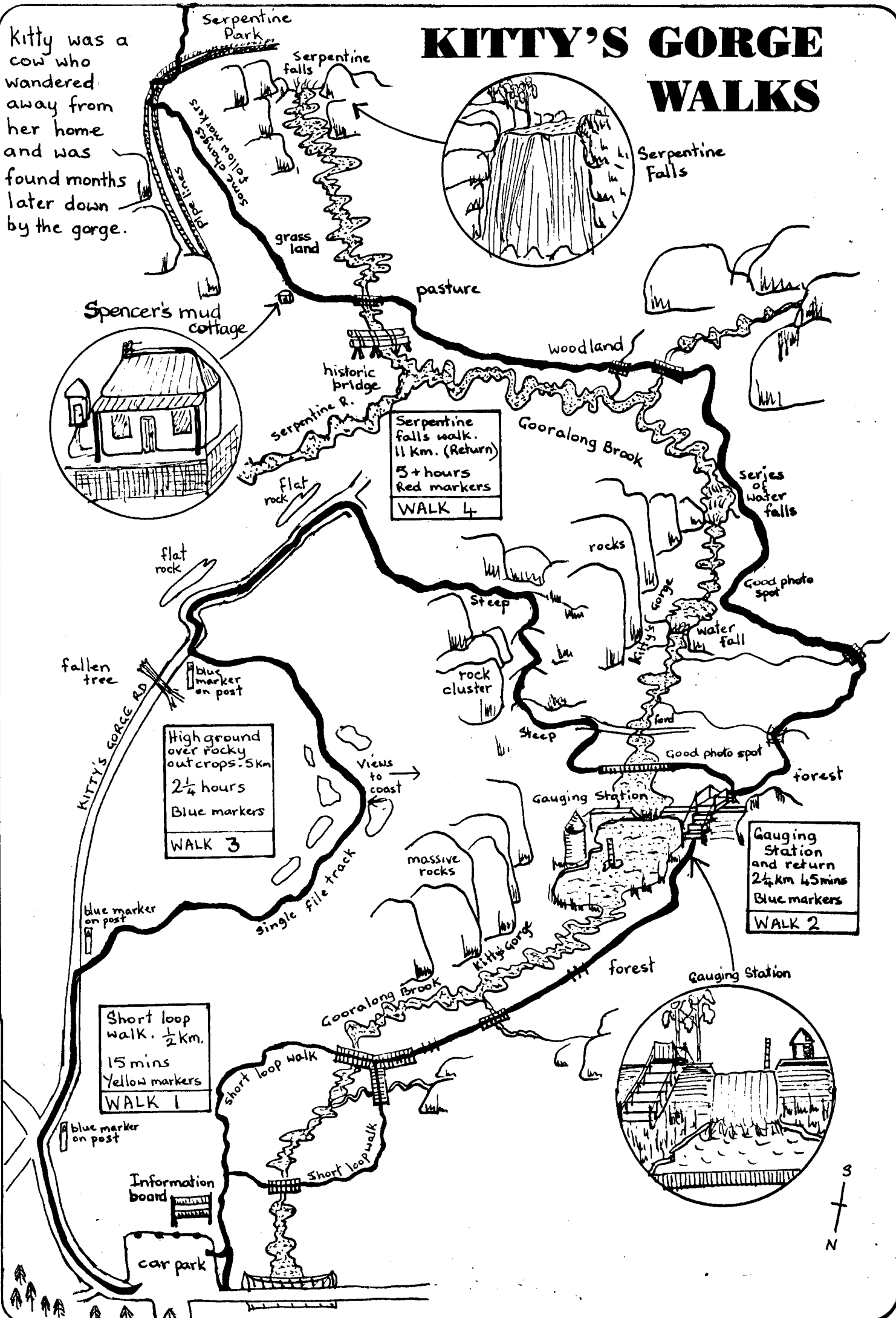


Kitty was a cow who wandered away from her home and was found months later down by the gorge.

KITTY'S GORGE WALKS



Serpentine falls walk.
11 km. (Return)
5+ hours
Red markers
WALK 4

High ground over rocky outcrops. 5km
2 1/4 hours
Blue markers
WALK 3

Gauging Station and return
2 1/4 km 45 mins
Blue markers
WALK 2

Short loop walk.
1/2 km.
15 mins
Yellow markers
WALK 1

